



FUTURE LAND USE MAP

Farmington, AR

-DRAFT-

Legend

- TRANSPORTATION**
- RAILROAD
 - Roads-NWAPC ones that update
 - BALLPARK TRAIL
- HYDROLOGICAL**
- FLOODPLAIN
 - USGS STREAM
- GREEN SPACE**
- FARMINGTON PARKS
 - Parcels - Washington County

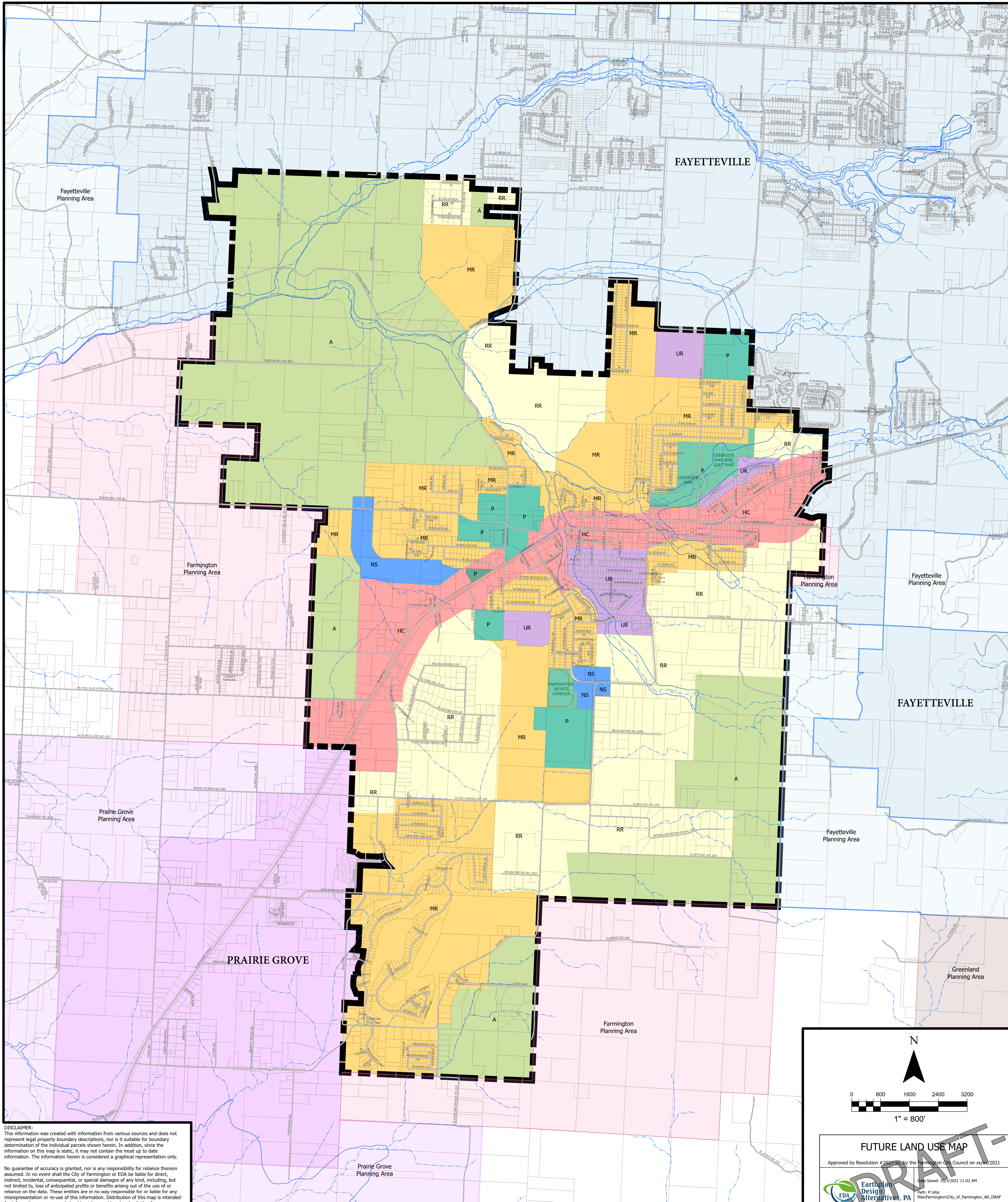
- PLANNING AREAS**
- Farmington
 - Fayetteville
 - Greenland
 - Prairie Grove
- CITY LIMITS**
- Farmington
 - Fayetteville
 - Greenland
 - Prairie Grove

- FUTURE LAND USE CATEGORIES**
- AGRICULTURAL - A
 - PUBLIC - P
 - RURAL RESIDENTIAL - RR
 - MEDIUM RESIDENTIAL - MR
 - URBAN RESIDENTIAL - UR
 - NEIGHBORHOOD SERVICES - NS
 - HWY COMMERCIAL - HC
 - LIGHT INDUSTRIAL - LI

This map is hereby accepted as the official Future Land Use Map for the City of Farmington, AR.

Mayor Date _____
City Clerk Date _____

Approved by Resolution #2021-08, by the Farmington City Council on 10/11/2021



DISCLAIMER:
This information was created with information from various sources and does not represent legal property boundary descriptions, nor is it suitable for boundary determination of the individual parcels shown herein. In addition, since the information on this map is static, it may not contain the most up to date information. The information herein is considered a graphical representation only.

No guarantee of accuracy is granted, nor is any responsibility for reliance thereon assumed. In no event shall the City of Farmington or EDA be liable for direct, indirect, incidental, consequential, or special damages of any kind, including, but not limited to, loss of anticipated profits or benefits arising out of the use of or reliance on the data. These entities are in no way responsible for or liable for any misrepresentation or re-use of this information. Distribution of this map is intended for information purposes and should not be considered authoritative for engineering, legal and other site-specific uses.

N

0 800 1600 2400 3200
1" = 800'

FUTURE LAND USE MAP
Approved by Resolution #2021-08 by the Farmington City Council on 10/11/2021

Earthplan Design Alternatives, PA
EDA JOB #: 2231

Date Saved: 10/5/2021 11:02 AM
Path: P:\pdp Farmington\City_of_Farmington_AR_DRAF